

# Resolution™

"A Vision With Clarity"

*Farm Mapping and Planning Software*



agresearch Farming, Food and Health. First™

*Te Ahuwhenua, Te Kai me te Whai Ora. Tuutahi!*

# Resolution™

*New Features!*

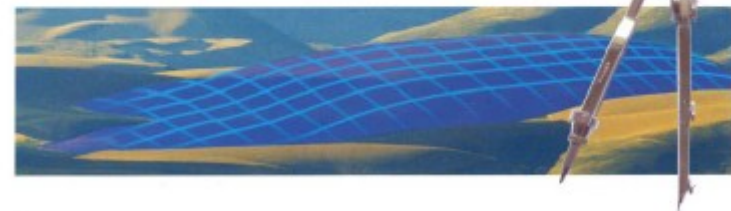
## Version 3.1

- ◇ Newly added list of Ballance fertilisers
- ◇ Updated list of Ravensdown fertilisers
- ◇ Support for the Garmin 4.0 interface
- ◇ More reliable code with numerous speed and bug improvements
- ◇ Feedback mechanism

## Version 3.0

- ◇ Improved map printing
- ◇ Ability to select individual fences and change information about those fences (such as fence type, number of wires, etc)
- ◇ Ability to join paddocks together by deleting fences between them
- ◇ Paddock list report
- ◇ Mob icons
- ◇ Improved farm summary report, summarising more features and fences by type
- ◇ Simpler install process for maps sourced from Terralink International
- ◇ Ability to export lists to CSV files
- ◇ Improved import of data from shape files, including associated data about shapes
- ◇ Import soil tests from a CSV file
- ◇ Share plans with other copies of your farm
- ◇ Simple way to email database backups to other people

[www.resolutionmap.com](http://www.resolutionmap.com)





### What is Resolution?

Resolution is an easy to use mapping and planning tool which will give you the accurate view of your farm you have always wanted.

### Map It!

Use the drawing tools to create paddocks, and let Resolution calculate their areas or the length of their fence lines. You can add in layers and objects to show where features are, such as: different soil types, water lines, troughs, plantations, houses and weeds.

Imagine the value in having an accurate map to:

- Display all of the details of your farm aerial photo
- Calculate the amount of fencing materials you need when subdividing paddocks
- Show contractors where spraying or fertiliser applications need to go
- View the position of different soil types
- Record where water lines are
- Measure distances and areas
- Show visitors where hazards are
- Export layers to third parties
- Record soil test transects



Figure 1. The Main Street showing the farm map, paddocks and layers

### Plan Ahead!

Decide on farm management in advance. Use the planning tools to customise planning scenarios for your particular situation:

- Plan your fertiliser applications. Calculate how much fertiliser you need to order. Print out your plan and give to your spreading contractor
- Plan your irrigation applications
- Plan your spraying. Print the plan out to help your spraying contractor.

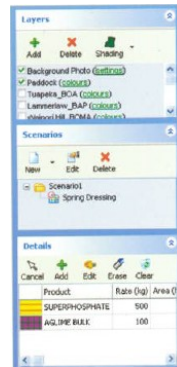


Figure 2. The Planning Tools screen

### Plan Ahead!

Imagine the ability to record a soil test against a transect and link the transect to a block. You will be able to generate a tabular report of soil test results over time, grouped by transect or block and view a graph of soil test response to fertiliser applications.

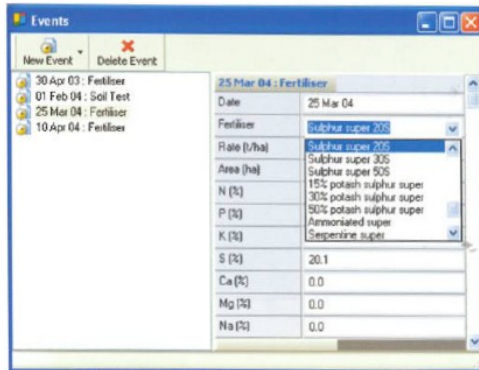


Figure 3. Adding fertiliser and soil test events

### Record Fertiliser Applications

Record fertiliser applications on a paddock or group of paddocks.

You can record where fertiliser actually went by importing the data directly from many spreading contractor's GPS systems.

Nutrient calculations are easy, with Resolution's in-built database of fertilisers with known nutrient content.

Generate a report to show the nutrients applied to a paddock over any time period.

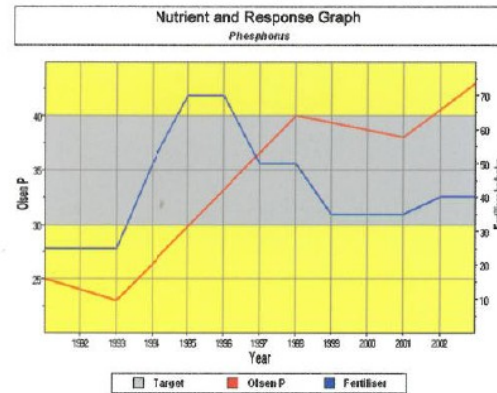


Figure 4. Nutrient response graph.

### Import & Export

Once your base map has been created, you have the ability to import new layers.

This could be from your spreader, or fertiliser company.

Imagine the ease of plugging in your Garmin GPS and importing waypoints.



Figure 5. GPS interface

Similarly you can also export layers to others. Send your spreader a map of exactly where you want fertiliser to go.

With Resolution they can then send it as a picture.

### Report It!

Reports are quick and easy to use in Resolution.

- Choose the paddocks and the layers you want and print them as high quality reports
- The farm summary report will provide you with accurate areas of paddocks, different types of vegetation or soil types
- Produce clear concise reports for planning
- Print out nutrient or fertiliser history
- Report trends in soil tests



Figure 6. Plan report